



Let's join together to create a Barrier Free Map

PADM, a specified non-profit organization (Patients Association for Distal Myopathy)



PADM, a specified non-profit organization, has been selected as one of the finalists of ***Google Impact Challenge**.

PROJECT OUTLINE

A project to share the barrier-free information of the area where wheelchair users visited in the world among the users.

Develop an application that users can easily post the data such as images, GPS, road conditions and etc. from their smart phones as the barrier-free information.

Then configure the program that users can browse, evaluate and invite each other on our website.



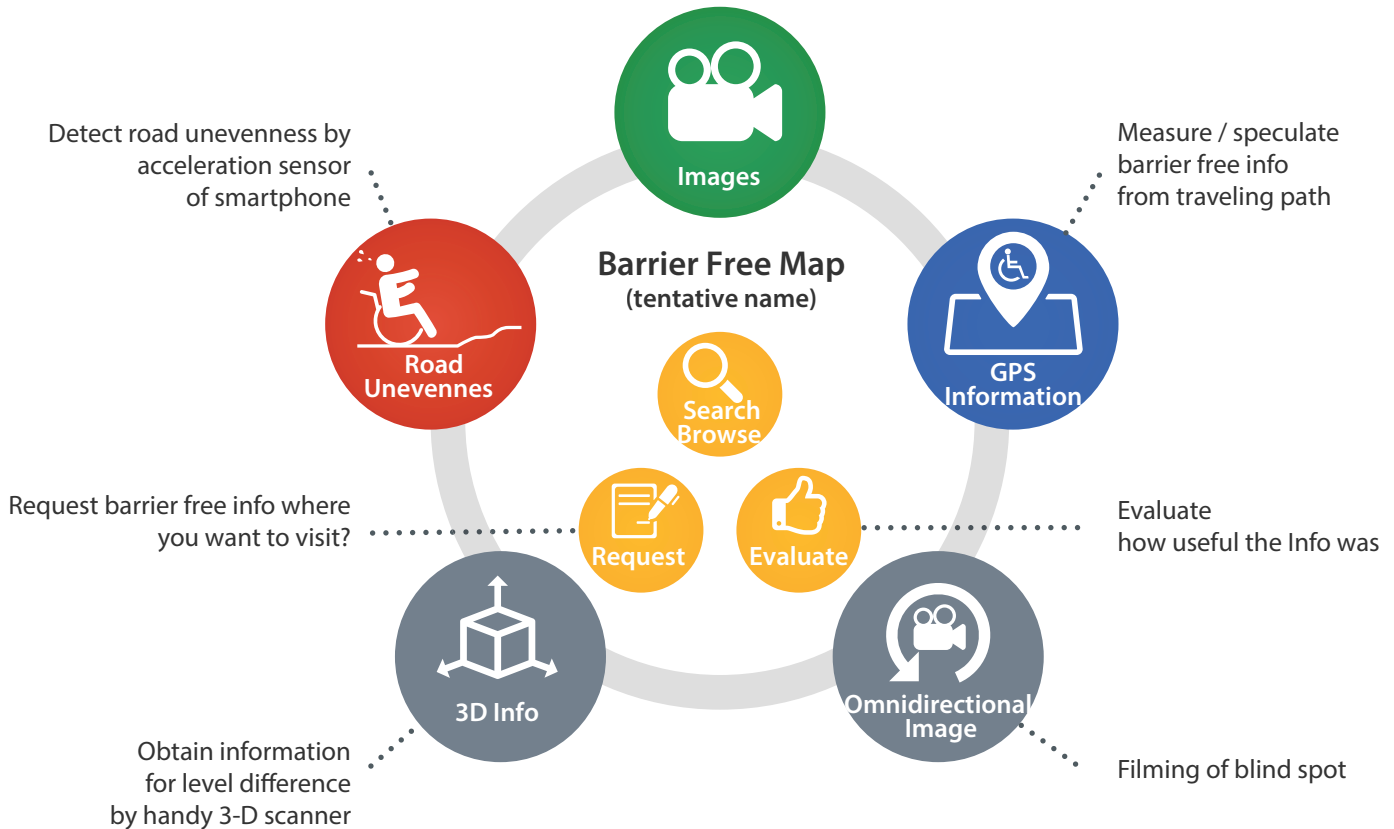
Carry your smartphone , Take a picture or video, and Upload it



Request where you want to go ⇔ Provide information where you went



Make it searchable to all the global barrier free information



* What is the Google Impact Challenge?

Excerpted from Google's official site.

The Google Impact Challenge is the program to support nonprofits to challenge for solving social problems utilizing various technology to make a better world, faster. Google has been holding this program in India, Brazil, England, USA and Australia. And finally we are holding in Japan.

HOW CAN WE USE THIS?

I want to go this place but I am afraid to go...

There is so many unknown barrier free information unless you actually go there. You can find out unknown barrier free information beforehand from someone who has already been there. You can also request information if it is not available.

I was able to go even that place ! Amazing !

There are many attractive small side streets in towns that you cannot usually find on sightseeing maps. If you were able to visit such places, please upload this barrier free information. It will expand other wheelchair user's scope of activities. Your positive evaluation can also be used to obtain the information others need.

My hobby is traveling ! Can I help you ?

Postings by non-wheelchair users are very valuable. You can enjoy different sentiments in your traveling experience when you think about the barrier free concept. And it will make it easier to respond to a request from wheelchair users and will make them appreciative. Your trip will become helpful to others.

PAST ACTIVITIES (PROJECT MEMBERS' MAJOR ACHIEVEMENT)



"I want to go out even though I am a wheelchair user !" "I wish the barrier free concept to spread !" "People will understand more about the wheelchair if they see more wheelchair users in town ?" She has started the Wheelchair Walker that introduces wheelchair spots on You Tube in order to achieve her dreams. Uploaded 74 videos so far showing the places in and out of Japan.



Activities to become hope for the 'Future' by gaining the designated status for the distal myopathy and for manufacturing new drugs. The activities include collecting 2.04 million signatures, providing healthcare devices and barrier free related 'Now' information to meet the needs of everyday life to live as a disabled person. As a result, distal myopathy has been registered as a designated rare disease in 2015.

Polan Plaza/Welfare Information Engineering & Civic Activities
Research & practice of communication support technology for severely disabled people

Introduction of research and activity of communication support for severely disabled people by ICT(Information and Communication Technology). Explains the useful and practical means and technologies for daily life. Specialized for the use of Intention Transmission Device for ALS (Amyotrophic Lateral Sclerosis) patients.

OriHime
コミュニケーションロボット オリヒメ



Development and promotion of communication robot named 'OriHime'. OriHime is an avatar robot that enables anyone experiencing loneliness to feel like they are with their significant others by sharing the experience. Even if you are unable to meet someone because of the distance, hospitalization or physical disabilities, OriHime enables you to participate in the every day life occasions.

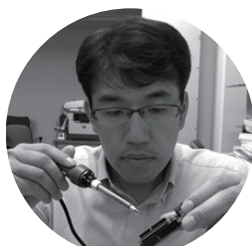
MAJOR PROJECT MEMBERS



Yuriko Oda
(Director)

PADM (Deputy Director)
Wheelchair Walker (Director)

Assumed the onset of the illness around year 2000 and diagnosed as Distal Myopathy in 2002. Mother of one child. Established the Patients Association for Distal Myopathy in 2008. Studied in Denmark, Fall 2010. Hobby to search and travel barrier free spots including the use of public transportation in and out of Japan.



Fumito Itoh
(CTO: Technical Manager)

Assistant Professor and Ph.D (Software Informatics) at Department of Physics and Material Science, Shimane University

Specialized in Welfare Information Engineering. Engaged in research and promotional activities of Communication Supporting Technology using ICT for severely disabled people. Working on rehabilitation technology with intention transmission technology that utilizes bio-information and adopting some TV games.



Ory Yoshifuji
(CKO: Intelligence Manager)

Ory Laboratory(President)

Developer of the communication robot 'OriHime'. Established 'Ory Laboratory, Inc.' in 2011. Received various awards including 'Yume Award 4' in 2014.



We need your vote for PADM!!!
Thank you very much for your support!!

** <https://impactchallenge.withgoogle.com/japan/charity/PADM>

